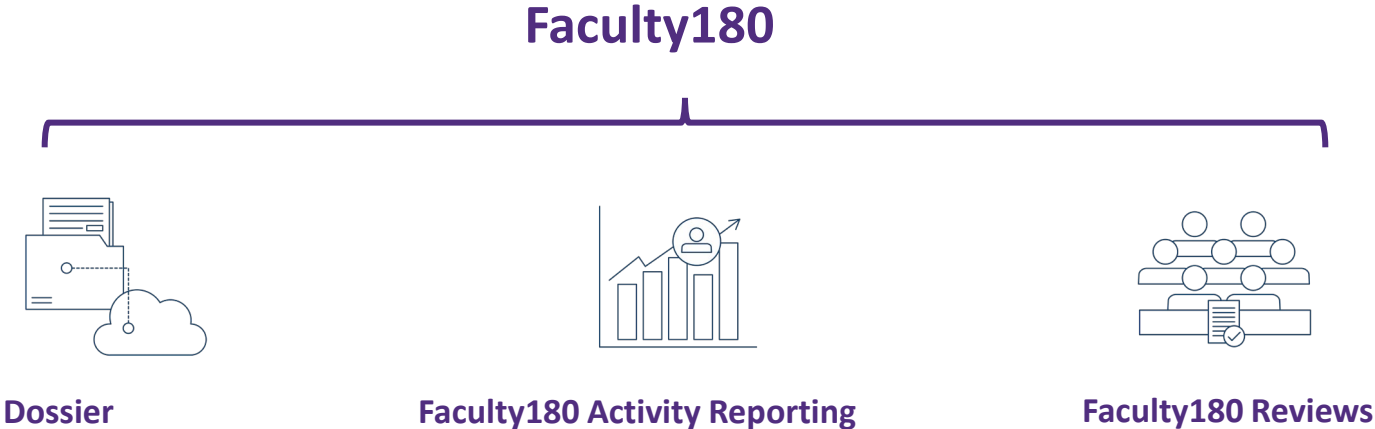


Faculty180



Cara Gohn
Faculty180 Coordinator

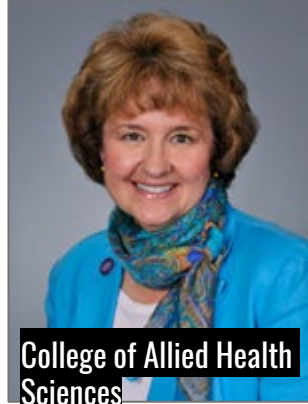


Faculty180 Information

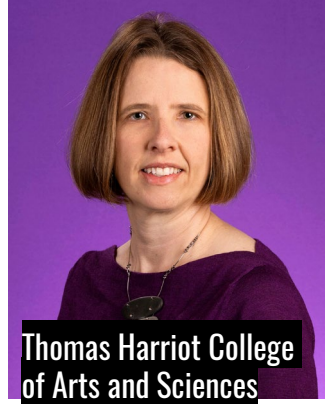
Cara Gohn
Faculty180 Coordinator
252-737-1254
gohnc@ecu.edu

Email: Faculty180@ecu.edu
Website: Faculty180.ecu.edu

College Coordinators



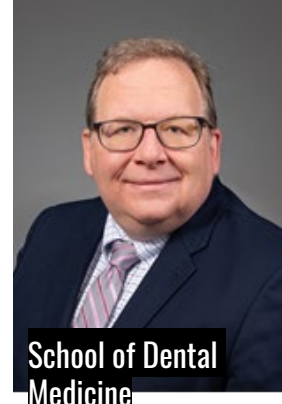
College of Allied Health Sciences
Leigh Cellucci
cellucci@ecu.edu
252-744-6072



Thomas Harriot College of Arts and Sciences
Marianne Montgomery
montgomerym@ecu.edu
252-328-6041



College of Business
Amy McMillan
mcmillana@ecu.edu
252-328-5337



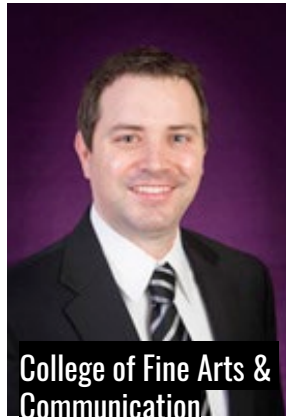
School of Dental Medicine
Daniel Stevens
stevensd19@ecu.edu
252-737-4625



College of Education
Scott Glass
glassj@ecu.edu
252-328-5670



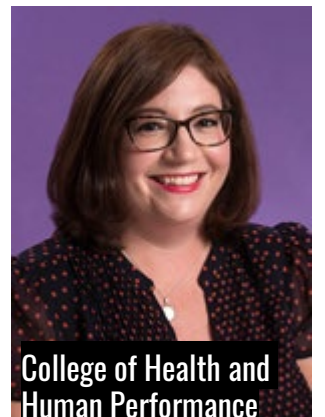
College of Engineering and Technology
Jason Yao
yaoj@ecu.edu
252-737-1029



College of Fine Arts & Communication
Jay Juchniewicz
juchniewiczj@ecu.edu
252-328-6851



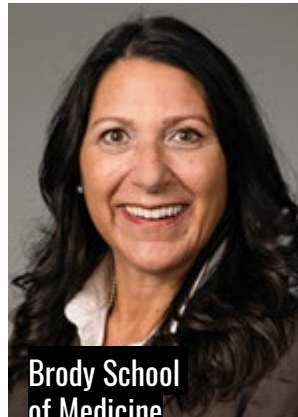
Joyner Library
Joseph Thomas
thomasw@ecu.edu
252-737-2728



College of Health and Human Performance
Susannah Berry
berrys@ecu.edu
252-328-1332



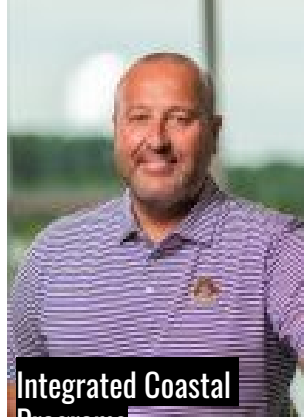
Laupus Library
Roger Russell
russellr@ecu.edu
252-744-3215



Brody School of Medicine
Allison Flowers
flowersa19@ecu.edu
252-744-2870



College of Nursing
Mary Jo Nimmo
nimmom@ecu.edu



Integrated Coastal Programs
Stuart Hamilton
hamiltons22@ecu.edu

Faculty180 Activity Reporting

- Auto loaded Course data
from Banner(*Student, Financial, HR System*)
- Auto loaded Proposal/Award data
from eTRACS (*Research Administration System*)
- Import records by connecting to ORCID
 - [Link to Directions](#)



Faculty180 Activity Reporting...continued

- Manually enter activities:
 - [Workload into Activity Distribution](#)
 - Other Teaching Activities
 - Scholarly Contributions (*Articles, Presentations, Book Chapters, etc.*)
 - Professional Service
 - Community Service
 - Professional Development
 - Professional Memberships



Faculty180 Workload




- [Workload / Activity Distribution](#)

▼ Activity Distribution

 Help

Within this form, record the percent effort for each category of activity--one example distribution is 80% teaching, 10% research, and 10% service. Consult your unit Code for guidance on appropriate percentage ranges. Enter whole numbers only. **The total should equal 100%**

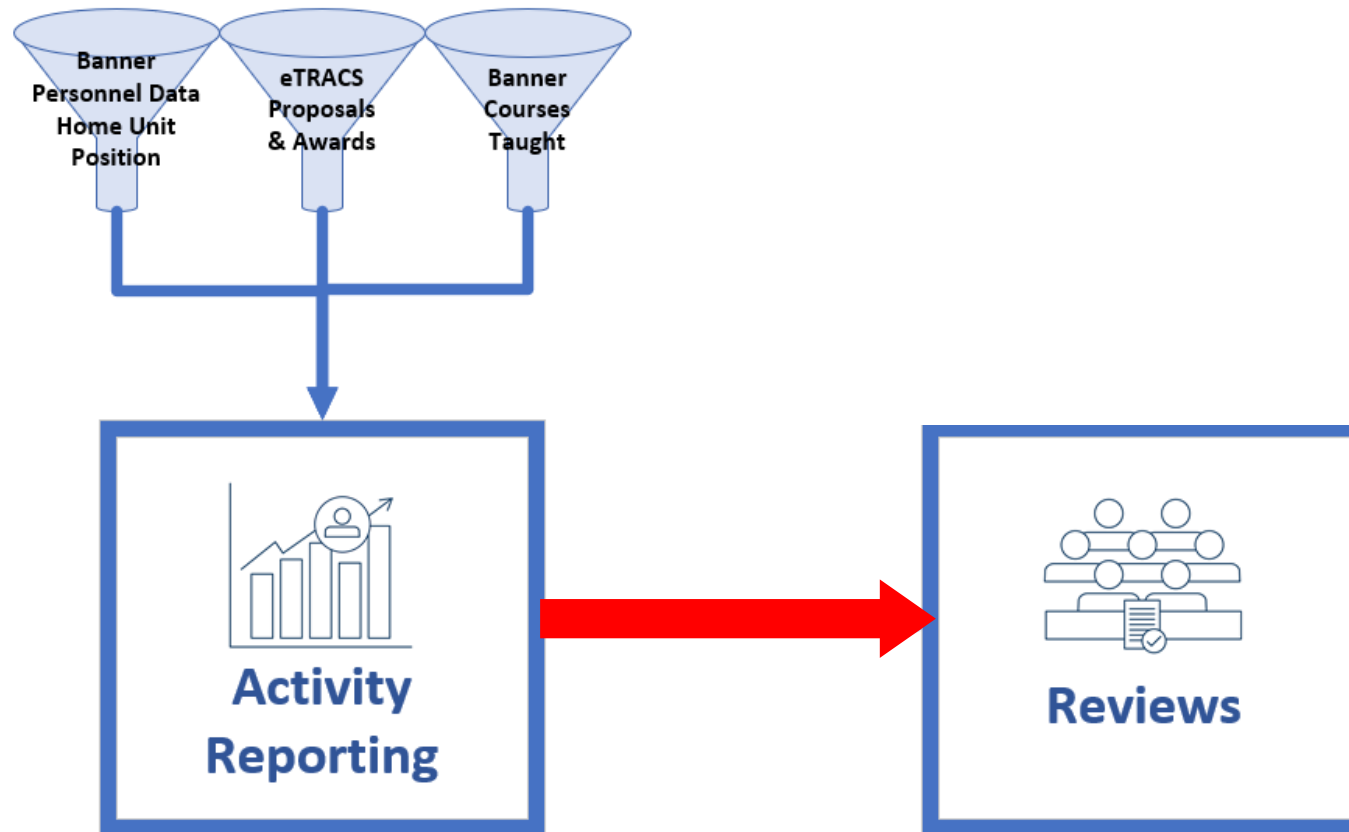
Note: The Workplan Policy defines Administrative Duties as "Service." Any percentage entered in Administrative Duties will be added to the Service percentage in the workplan. "Other" should no longer be used.

| Teaching ^ | Research or Creative Activity ^ | Service ^ | Patient Care ^ | Administrative Duties (Defined as Service) ^ | Other (No longer in use) ^ | Total ^ | Description ^ | Start Semester ^ | End Semester ^ | Actions |
|------------|---------------------------------|-----------|----------------|--|----------------------------|---------|---------------|------------------|----------------|--|
| 80 | 10 | 10 | | | 0 | 100 | | Summer 2024 | Spring 2025 |    |

Add

Faculty180 Reviews for Annual Evaluations

Faculty180 Suite



Resources Faculty180.ecu.edu/resources

The screenshot shows the Faculty180 website. The top navigation bar includes the ECU logo, a search icon, and menu items: Faculty180, Summer Tour, About Scholars@ECU, College Coordinators (highlighted with a red box), Steering Committee, Resources (highlighted with a red box), and FAQ. Below the navigation, the page title is 'Resources' with a bulleted list of links: Faculty180 Activity Reporting, Faculty180 Reviews, and Faculty180 Dossier. To the right, a message reads 'Not able to find what you were looking for?' with two yellow buttons: 'Submit Help Ticket' and 'Upcoming Training' (highlighted with a red box). Below this is a section titled 'Faculty180 Activity Reporting User Help' containing a table with columns for 'Help Guide', 'Video', and 'Audience'.

| Help Guide | Video | Audience |
|---|---|----------|
| Introduction to Faculty 180 Activity Reporting | Introduction Help Video | All |
| Faculty180 Activity Reporting Quick Reference Guide | | |
| Reporting | | All |
| Administrative Reports for Chairs and Associate Deans Video Administrative Reports - Quick Reference Guide | Help Video | |
| Guide to using ecuBIC reports for history of Courses Taught | | |
| Guide to using Reports to identify Diversity, Equity & Inclusion Activities | | |

Upcoming Training

<https://faculty180.ecu.edu/training/>

| Session Name | Description | Related Training Guides | Date & Time |
|--|--|---|---|
| Faculty180: Entering Activities for Annual Reviews & The Year Ahead | This training will provide faculty with an overview of Faculty180 Activity Reporting and how to enter and update activity records. Faculty will learn about other features available in Faculty180 like generating vitas, Dossier, and how Faculty180 will facilitate various personnel actions in the year ahead. | Activity Reporting Quick User Guide | 9/13/2024 12:00pm |
| Faculty180: Annual Evaluation Training for Faculty | In this session faculty will learn how to submit their annual report in Faculty180 for the annual evaluation process. Included in the training will be a brief overview of how to update and add professional activities that generate in the annual report. | Annual Evaluation User Guidance | 2/26/2025 3:00pm 3/18/2025 12:00pm |

Faculty180 Fun Sized!

<https://faculty180.ecu.edu/fun-sized/>



Fun Sized!

Faculty180 – Fun Sized! is a webpage full of bite sized tips about Faculty180. Various frequently asked questions and topics are highlighted below. Questions about any of these topics can be directed to Faculty180@ecu.edu.



Tip #1 - Training & Resources



Tip #2 - Updating Activities



Tip #3 - Scholarly & Creative Activities



Tip #4 - Scholars@ECU



Tip #5 - Student & Faculty Mentoring



Tip #6 - Committees



Tip #7 - Other Teaching Activities



Tip #8 - Reviews

Questions?

Contact Faculty180@ecu.edu with questions.